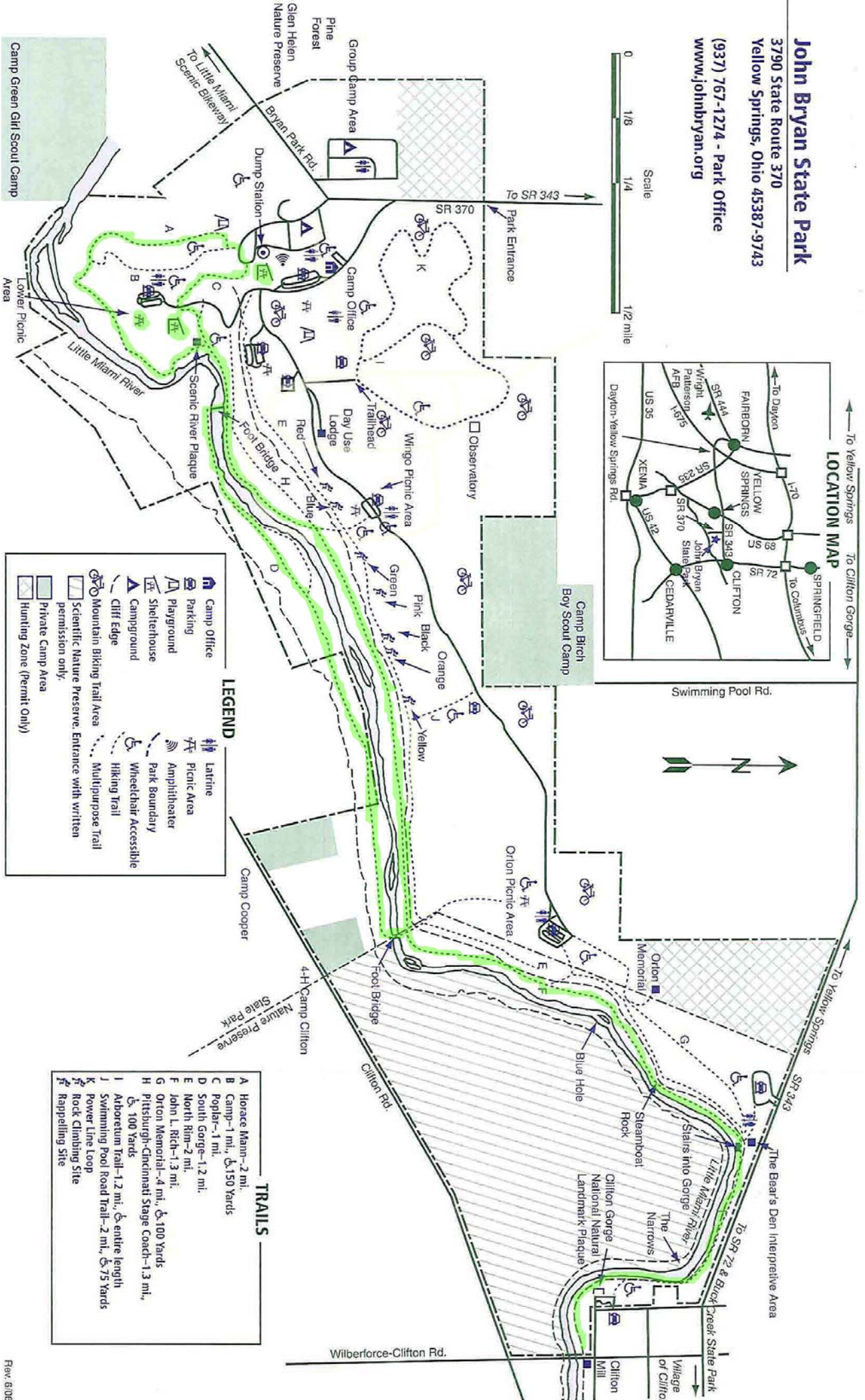
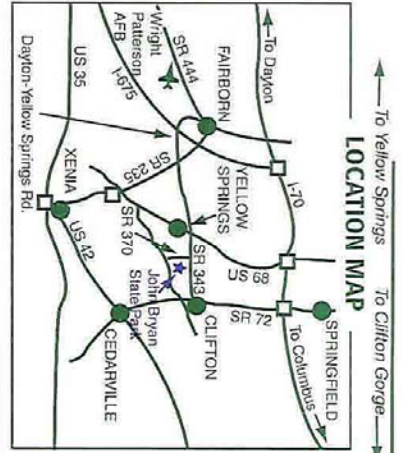
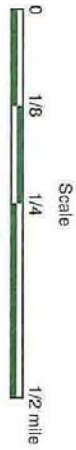


John Bryan State Park
 3790 State Route 370
 Yellow Springs, Ohio 45387-9743
 (937) 767-1274 - Park Office
 www.johnbryan.org



LEGEND

	Camp Office		Latrine
	Parking		Picnic Area
	Shelterhouse		Park Boundary
	Campground		Wheelchair Accessible
	Cliff Edge		Hiking Trail
	Mountain Biking Trail Area		Multipurpose Trail
	Scientific Nature Preserve, Entrance with written permission only.		
	Private Camp Area		
	Hunting Zone (Permit Only)		

TRAILS

A	Horace Mann--2 mi.
B	Camp--1 mi., ⚔ 150 Yards
C	Poplar--1 mi.
D	South Gorge--1.2 mi.
E	North Rim--2 mi.
F	John L. Rich--1.3 mi.
G	Orton Memorial--4 mi., ⚔ 100 Yards
H	Pittsburgh-Cincinnati Stage Coach--1.3 mi., ⚔ 100 Yards
I	Arboretum Trail--1.2 mi., ⚔ entire length
J	Swimming Pool Road Trail--2 mi., ⚔ 75 Yards
K	Power Line Loop
	Rock Climbing Site
	Rappelling Site